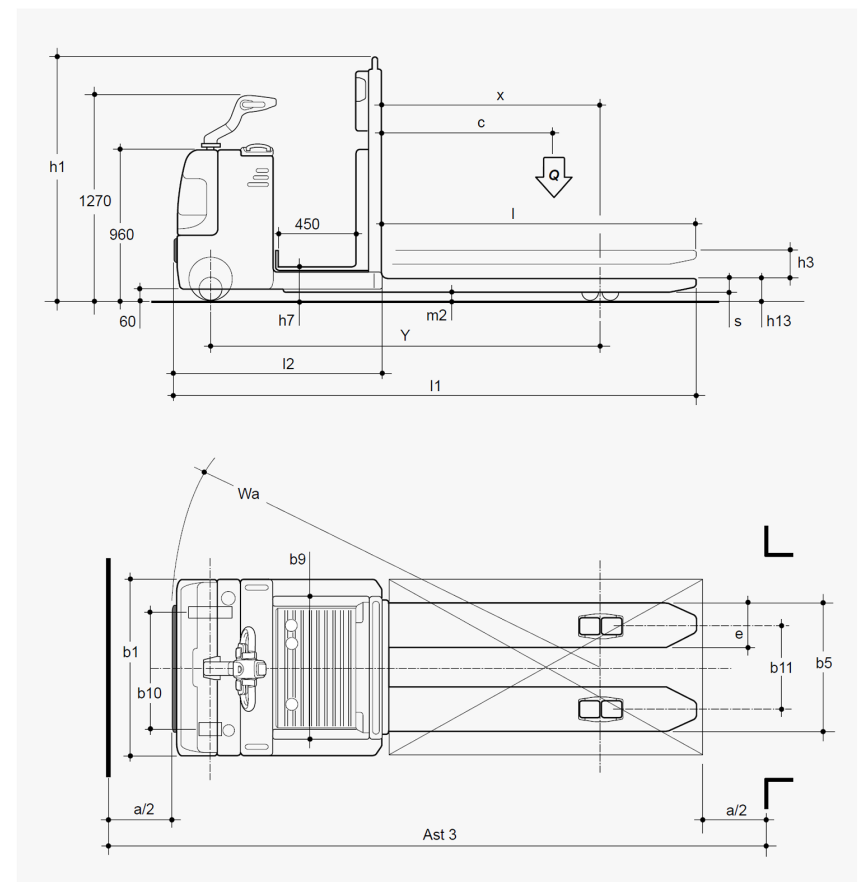


Characteristics	1.1	Manufacturer		Clark			
	1.2	Manufacturer's model designation		C OP 20			
	1.3	Drive : E (electric)		E			
	1.4	Type of control : T (tiller) S (steering wheel) P (standing)		T / P S / P			
	1.5	Load capacity		Q (t) 2.0			
	1.6	Load centre distance		c (mm) 600			
	1.8	Load distance, centre of drive axle to fork		X (mm) 980			
	1.9	Wheelbase		Y (mm) 2.010			
	Weight	2.1	Service weight (battery included)		Kg 914		
2.2		Axle loading mast (with load)		front / rear Kg 1.160 / 1.780			
2.3		Axle loading mast (without load)		front / rear Kg 230 / 684			
Wheels - Chassis	3.1	Tyres : vlk (vulkollan) plt (polyurethane)		vlk			
	3.2	Front wheels size		mm 245 / 150			
	3.3	Rear wheels size		mm 85			
	3.5	Wheels : number front / rear (x = traction)		1x + 2 / 4			
	3.7	Rear track width		b 10 (mm) 520			
Dimensions	4.2	Lowered mast height		h1 (mm) 1.420			
	4.4	Lifting height		h3 (mm) 120			
	4.5	Extended mast height		h4 (mm) 1.640			
	4.7	Overhead guard height		h6 (mm)			
	4.8	Seat height / standing height		h7 (mm) 155			
	4.11	Additional lift		h9 (mm)			
	4.14	Standing height, elevated		h12 (mm) 155			
	4.19	Overall length (without load)		l1 (mm) 2.510			
	4.20	Length to forks face		l2 (mm) 1.360			
	4.21	Overall width		b1 / b2 (mm) 800			
	4.22	Forks dimensions		s / e / l 60 / 180 / 1.150			
	4.24	Fork carriage width		b3 (mm) 550			
	4.25	Width over forks		b5 (mm) 540			
	4.27	Width over side rollers		b6 (mm)			
	4.31	Ground clearance, under mast		laden m1 (mm) 55			
	4.32	Ground clearance		laden m2 (mm) 20			
	4.34	Aisle width with pallets 1000 x 1200 forking side 1200		Ast (mm)			
		Aisle width with pallets 1000 x 1200 forking side 800		Ast (mm) 2.760			
	4.35	Turning radius		Wa (mm) 2.240			
	4.39	Total lifting height		h3+h9 (mm)			
	4.40	Picking height		h12+1600 (mm) 1.755			
	4.42	Pallet width		b12 (mm) 800			
4.43	Pallet length		l6 (mm) 1.200				
4.44	Operator's working place width		(mm) 560				
4.45	Operator's cab height		(mm)				
4.46	Operator's cab width		b9 (mm) 650				
	Platform's Length / height / width		(mm) 560 / 650				
Performances	5.1	Travel speed		laden / unladen Km / h 12 / 13			
	5.2	Lifting speed		laden / unladen m / s 0.04 / 0.05			
	5.3	Lowering speed		laden / unladen m / s 0.26 / 0.18			
	5.10	Service brake M (mechanical) I (hydraulic) IV (inversion braking)		IV			
	5.11	Parking brake EM (electromagnetical)		EM			
El. Motor	6.1	Traction motor, rating S2 60 min		KW 2.6			
	6.2	Lifting motor, rating S3 15%		KW 2			
	6.3	Battery according DIN 43531 / 35 / 36 A, B, C, no					
	6.4	Battery voltage, nominal capacity K5		V / Ah 24 / 300			
	6.5	Battery weight (± 5 %)		Kg 200			
Others	8.1	Type of travel control		MOS DC			
	8.4	Sound level at driver's ear		dB (A) < 70			
	8.6	Steering : E (electric)		E			
Technical specification according VDI 2198				DS.021EN.REV.02			

All values shown are for standard lift truck with standard equipment. If the truck is supplied with options, values may change. All values given may vary +5% and -10% due to the motor and system tolerances and represent nominal values obtained under typical operating conditions.



l		c	x	Y	l1	Wa	Ast3	(Q) t
1.150	mm	600	980	2.010	2.390	2.640	2.640	2.0
1.500	mm	750	850	1.880	2.740	2.940	2.940	2.0
2.250	mm	1.125	1.600	2.630	3.490	3.690	3.690	2.0
2.400	mm	1.200	1.750	2.780	3.640	3.840	3.840	2.0