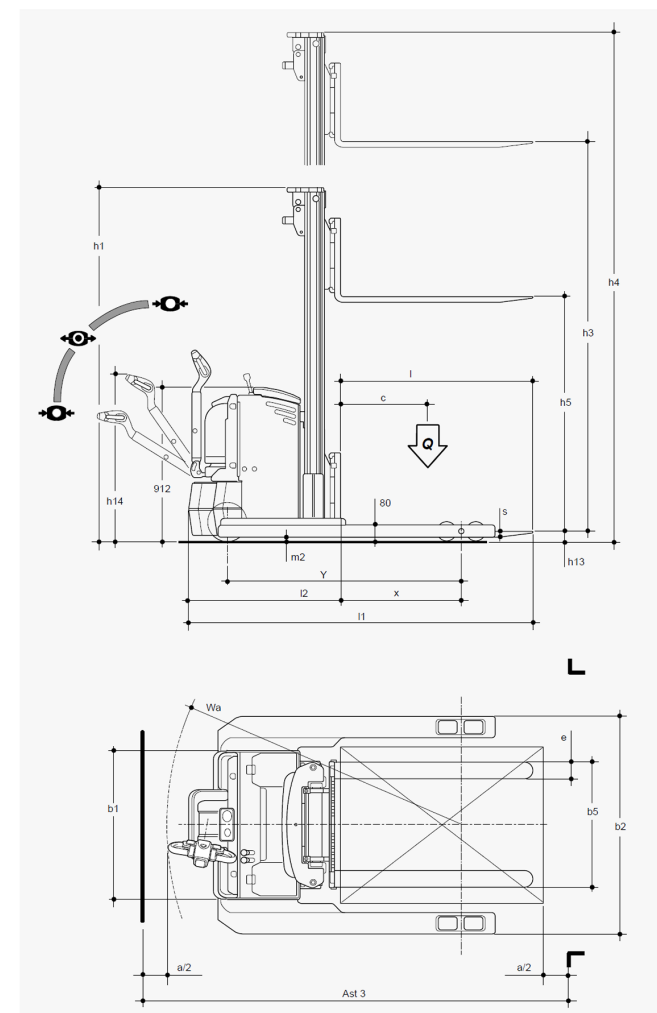


Characteristics	1.1	Manufacturer		<b>Clark</b>		
	1.2	Manufacturer's model designation		<b>C PS LS 15</b>		
			<b>mm</b>	<b>R = 880</b>		
	1.3	Drive : E ( electric )		E		
	1.4	Type of control : T (tiller) S (steering wheel) A (pedestrian) P (standing) R (seated)		T / A		
	1.5	Load capacity	<b>Q ( t )</b>	1.5 - 2.0		
	1.6	Load centre distance	<b>c ( mm )</b>	600		
	1.8	Load distance, centre of drive axle to fork	<b>X ( mm )</b>	720		
	1.9	Wheelbase	<b>Y ( mm )</b>	1.400		
Weights	2.1	Service weight ( battery included )	<b>Kg</b>	1.260		
	2.2	Axle loading ( with load )	front / rear	<b>Kg</b>		
	2.3	Axle loading ( without load )	front / rear	<b>Kg</b>		
Wheels - Chassis	3.1	Tyres : plt ( polyurethane ) vlk ( vulkollan )		plt		
	3.2	Front wheels size	<b>mm</b>	245		
	3.3	Rear wheels size	<b>mm</b>	85		
	3.4	Stabilizers wheels dimensions	<b>mm</b>			
	3.5	Wheels : number front / rear ( x = traction )		1x / 4		
	3.6	Front track width	<b>b 10</b>			
	3.7	Rear track width	<b>b 11</b>	1.010		
Dimensions	4.2	Lowered mast height	<b>h1 ( mm )</b>	2.105		
	4.3	Free lift	<b>h5 ( mm )</b>	1.520		
	4.4	Lifting height	<b>h3 ( mm )</b>	3.100		
	4.5	Extended mast height	<b>h4 ( mm )</b>	3.700		
	4.6	Free lift				
	4.9	Height of tiller arm in drive position ( min / max )	<b>h14 ( mm )</b>	820 / 1.280		
	4.15	Forks lowered height	<b>h13 ( mm )</b>	40		
	4.19	Total length	<b>l1 ( mm )</b>	2.070		
	4.20	Length to forks face	<b>l2 ( mm )</b>	920		
	4.21	Overall width	<b>b1 / b2 ( mm )</b>	880 / 1.140		
	4.22	Forks dimensions	<b>s / e / l</b>	35 / 100 / 1.150		
	4.24	Fork carriage width	<b>b3 ( mm )</b>	760		
	4.25	Width over forks	<b>b5 ( mm )</b>	750		
	4.32	Ground clearance	laden	<b>m2 ( mm )</b>	20	
	4.33	Aisle width for pallets 1000 x 1200 forking side 1200		<b>Ast3 ( mm )</b>		
4.34	Aisle width for pallets 800 x 1200 forking side 800		<b>Ast3 ( mm )</b>	2.580		
4.35	Turning radius		<b>Wa ( mm )</b>	1.900		
Performances	5.1	Travel speed	laden / unladen	<b>Km / h</b>	5.8 / 6	
	5.2	Lifting speed	laden / unladen	<b>m / s</b>	0.12 / 0.18	
	5.3	Lowering speed	laden / unladen	<b>m / s</b>	0.45 / 0.40	
	5.7	Gradient performance ( S2 30 min )		<b>%</b>		
	5.8	Max gradient performance ( S2 5 min )		<b>%</b>	10 / 15	
5.10	Service brake M ( mechanical ) I ( hydraulic ) IV ( inversion braking )			IV		
El/Motor	6.1	Traction motor, rating S2 60 min	<b>KW</b>		2	
	6.2	Lifting motor, rating S3 15%	<b>KW</b>		3	
	6.3	Battery according DIN 43531 / 35 / 36 A, B, C, no				no
	6.4	Battery voltage, nominal capacity K5	<b>V / Ah</b>			24 / 300
	6.5	Battery weight ( ± 5 % )	<b>Kg</b>			210
Others	8.1	Type of travel control			MOS DC	
	8.4	Sound level at driver's ear	<b>dB ( A )</b>		< 70	

Technical specification according to VDI 2198

DS.028EN.REV.01

All values shown are for standard lift truck with standard equipment. If the truck is supplied with options, values may change. All values given may vary +5% and -10% due to the motor and system tolerances and represent nominal values obtained under typical operating conditions.



h3		h1	h4	h5	715 BLK (Q) t	720 BLK (Q) t
1.650	mm	2.085	2.250	1.565	1.5	2.0
2.800	mm	1.955	3.400	1.370	1.5	2.0
3.100	mm	2.105	3.700	1.520	1.5	2.0
3.600	mm	2.355	4.200	1.770	1.3	1.8
3.900	mm	1.855	4.500	1.270	1.1	1.6
4.200	mm	1.955	4.800	1.370	1.0	1.5
4.650	mm	2.105	5.250	1.520	0.9	1.4