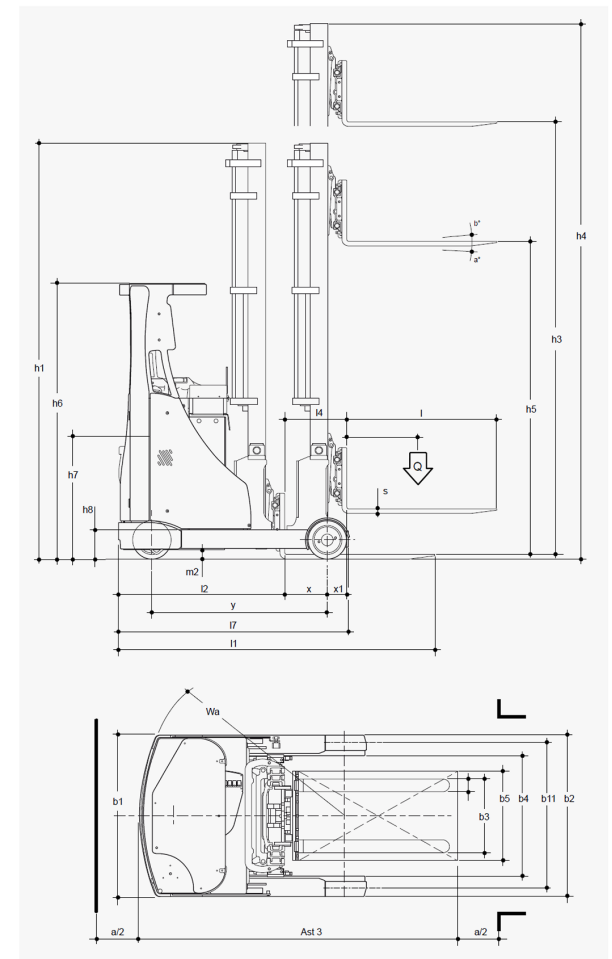


Characteristics		Clark	
1.1	Manufacturer	<b>Clark</b>	
1.2	Manufacturer's model designation	<b>C RT 16 ac</b>	
	T = integrated side-shift	T	
1.3	Drive : E ( electric )	E	
1.4	Type of control : S (steering wheel) R (seated)	S / R	
1.5	Load capacity	<b>Q ( t )</b>	1.6
1.6	Load centre distance	<b>c ( mm )</b>	600
1.8	Load distance, centre of drive axle to fork	<b>X ( mm )</b>	425
	Mast advanced	<b>X1 ( mm )</b>	220
1.9	Wheelbase	<b>Y ( mm )</b>	1.470
Weights			
2.1	Service weight ( battery included )	<b>Kg</b>	3.880
2.3	Axle loading mast retracted ( without load )	front / rear	<b>Kg</b> 2.360 / 1.520
2.4	Axle loading mast advanced ( with load )	front / rear	<b>Kg</b> 742 / 4.750
2.5	Axle loading mast retracted ( with load )	front / rear	<b>Kg</b> 2.050 / 3.440
Wheels - Chassis			
3.1	Tyres : vIk ( vulkollan ) se ( superelastic )	vIk	
3.2	Front wheels size	<b>mm</b>	343
3.3	Rear wheels size	<b>mm</b>	350
3.5	Wheels : number front / rear ( x = traction )	1x / 2	
3.7	Rear track width	<b>b 11 ( mm )</b>	1.182
Dimensions			
4.1	Mast / fork carriage tilted forward / backward	<b>a / b</b>	3 / 5
4.2	Lowered mast height	<b>h1 ( mm )</b>	2.655
4.3	Free lift	<b>h5 ( mm )</b>	2.130
4.4	Lifting height	<b>h3 ( mm )</b>	6.000
4.5	Extended mast height	<b>h4 ( mm )</b>	6.620
4.7	Overhead guard ( cab ) height	<b>h6 ( mm )</b>	2.100
4.8	Seat height	<b>h7 ( mm )</b>	1.050
4.10	Height of wheels arm	<b>h8 ( mm )</b>	225
4.19	Total length	<b>l1 ( mm )</b>	2.450
4.20	Length to forks face	<b>l2 ( mm )</b>	1.300
4.21	Overall width	<b>b1 / b2 ( mm )</b>	1.270
4.22	Forks dimensions	<b>s / e / l</b>	35 / 130 / 1.150
4.23	Fork carriage, class / type A, B	II A	
4.24	Fork carriage width	<b>b5 ( mm )</b>	840
4.25	Width over forks	<b>b3 ( mm )</b>	720
4.26	Distance between support arms / loading surfaces	<b>b4 ( mm )</b>	948
4.28	Reach distance	<b>l4 ( mm )</b>	655
4.32	Ground clearance	laden	<b>m2 ( mm )</b> 75
4.33	Aisle width with pallets 1000 x 1200 forking side 1200	<b>Ast3 ( mm )</b>	2.700
4.34	Aisle width with pallets 800 x 1200 forking side 800	<b>Ast3 ( mm )</b>	2.793
4.35	Turning radius	<b>Wa ( mm )</b>	1.726
4.37	Length across wheel arms	<b>l7 ( mm )</b>	1.950
Performances			
5.1	Travel speed	laden / unladen	<b>Km / h</b> 13 / 13
5.2	Lifting speed	laden / unladen	<b>m / s</b> 0.35 / 0.5
5.3	Lowering speed	laden / unladen	<b>m / s</b> 0.5 / 0.45
5.7	Gradient performance	%	
5.8	Max gradient performance	%	
5.9	Acceleration time ( 10 m )	<b>s</b> 6 / 5.6	
5.10	Service brake M (mechanical) I (hydraulic) IV (inversion braking) E (electromagnetic)	I / E	
El. motor			
6.1	Traction motor, rating S2 60 min	<b>KW</b>	6.5
6.2	Lifting motor, rating S3 15%	<b>KW</b>	15
6.3	Battery according DIN 43531 / 35 / 36 A, B, C, no	no	
6.4	Battery voltage, nominal capacity K5	<b>V / Ah</b>	48 / 620
6.5	Battery weight ( ± 5 % )	<b>Kg</b>	950
	Battery dimensions l / w / h	<b>L/W/H mm</b>	1.220 / 346 / 770
Others			
8.1	Type of travel control	INVERTER	
8.2	Operating pressure for attachments	<b>bar</b>	180
8.3	Oil volume for attachments ( max available )	<b>l / min</b>	25
8.4	Sound level at driver's ear	<b>dB ( A )</b>	< 70
Technical specification according VDI 2198			<b>DS.090EN.REV.00</b>
All values shown are for standard lift truck with standard equipment. If the truck is supplied with options, values may change. All values given may vary +5% and -10% due to the motor and system tolerances and represent nominal values obtained under typical operating conditions.			



h3		h1	h4	h5	(Q) t
4.200	mm	2.045	4.820	1.470	1.6
4.500	mm	2.145	5.120	1.575	1.6
5.200	mm	2.390	5.820	1.810	1.6
6.000	mm	2.655	6.620	2.130	1.6
6.700	mm	2.925	7.320	2.360	1.5
7.500	mm	3.185	8.120	2.630	1.4
8.250	mm	3.480	8.870	2.930	1.4
9.000	mm	3.825	9.620	3.280	1.0